



### 5500 & 7700 Series Half Mask Air-Purifying Respirator User's Instructions

### Serie 5500 & 7700 Respirador Purificador De Media Máscara Manual de Instrucción

### Série 5500 & 7700 Respirateur de filtration d'air a masque bucco-nasal Guide d'utilisation



© 2006 North Safety Products Printed in U.S.A. Part No. 46000375 Rev. D

### REPLACEMENT PARTS PIEZAS DE REPUESTO PIÈCES DE REMPLACEMENT 7700 & 5500 Series Facepiece Replacement Parts

Product Number Description

Complete Assembly

#### ASSEMBLING THE RESPIRATOR ENSAMBLANDO EL RESPIRADOR ASSEMBLER LE RESPIRATEUR



1



2

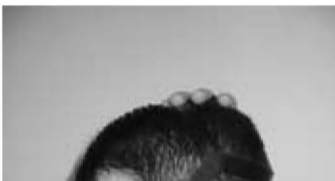


3



4

#### PUTTING ON THE RESPIRATOR COLOCANDO EL RESPIRADOR MISE EN PLACE DU RESPIRATEUR



#### PUTTING ON THE RESPIRATOR

Only put on your respirator in an area with uncontaminated air. Visually check the respirator to make sure all major components are in place and in working condition. Verify the correct cartridges and/or filters are being used and they are securely attached to the facepiece. Use a mirror to assure the respirator is positioned correctly on your face. Remove eyewear, hard hat or other head gear before putting on the respirator. Replace after you put on the respirator.

- Adjust the respirator head straps and clips to their full outward position.
- With one hand holding the respirator, place your chin inside the chin cup and the top of the respirator over your nose (Photo 5). If using the Backpack Adapter, the breathing tubes will go over your head and rest on your shoulders.
- With the other hand, position the plastic straps so they are centered on your head (Photo 6). Remove any slack in the upper straps by pulling the two end tabs, back and toward your ears (Photo 7). Do not tighten.
- Fasten the bottom elastic straps behind your neck and under your hair. Remove any slack in the bottom straps by pulling the end tabs (Photo 8). Do not tighten.
- Tighten the upper head straps in small equal increments to ensure the top half of the respirator is tightened evenly and it is snug, comfortable and centered on your face (Photo 9).
- Tighten the lower head straps by pulling evenly on the end straps in the back of the respirator until the entire respirator is snug, comfortable and centered on your face (Photo 10).
- Pull the respirator away from your face and maneuver it to assure it's centered, comfortable and snug (Photo 11). A final small adjustment may be made, by again tightening the upper and lower straps.
- The plastic loops on the top straps slide back to hold down any loose strap material.

#### NOTES

The tightness of the respirator will vary depending on the cartridges and/or filters used and the user's level of activity while the respirator is in use. When using combination cartridges and/or during high levels of activity, the respirator should be reasonably tight to the face to assure it does not move during use. Be careful not to over tighten the respirator. Over tightening could distort the facepiece seal and may cause leakage.

Your supervisor or safety director should assist you to determine how tight the respirator should be on your face. Ultimately the user will have the best sense as to when the respirator needs to be adjusted and how tight a fit is needed to ensure a good face-to-facepiece seal, prior to and during use.

#### FACE-TO-FACEPIECE SEAL CHECK

Each time you put on the respirator, before entering an area containing hazardous atmospheres, and periodically while wearing the respirator in the contaminated area, check the effectiveness of the face-to-facepiece seal by carrying out a positive pressure seal check. Prior to this seal check, exhale quickly and vigorously to clear any obstructions within the exhalation assembly.

- Place the palm of your hand over the opening in the exhalation valve guard and exhale normally (Photo 12).
- If the facepiece bulges slightly and no air leaks between the facepiece and the face, an effective seal has been obtained.
- If air leaks out between the facepiece and the face, reset the facepiece and/or readjust the tension of the head straps to eliminate the leakage.
- This check must be repeated until an effective seal of the facepiece-to-face is obtained. If you cannot achieve an effective seal, do not enter the contaminated area. See your Supervisor.

#### SPECIAL USER'S INSTRUCTIONS

If the air-purifying cartridges have End-of-Service-Life Indicators (ESLI), you must be able to see the ESLI without moving the facepiece while wearing the respirator. See specific User Instructions supplied with the cartridges for additional ESLI information.

#### WARNINGS

If you remain in the contaminated area after the cartridges expire, you risk exposure to hazardous gases or vapors that could result in serious injury, illness or death.

Do not use the Backpack accessory with air-purifying cartridges that have ESLI because you will not be able to see the indicators while wearing the respirator. If you cannot see the indicators, you will not know when the cartridges have expired.

#### INTRODUCTION

These instructions are for the North 5500 & 7700 Series Half Mask Air-Purifying Respirators. These air-purifying respirators consist of a facepiece assembly and a pair of replaceable air-purifying cartridges and/or filters. The facepiece, cartridges and/or filters may be sold separately.

These respirators are approved by the National Institute for Occupational Safety and Health (NIOSH) for respiratory protection against hazardous gases, vapors and/or particulates, depending on the air-purifying cartridges and/or filters used and the contaminant concentration and/or toxicity; but only if there is sufficient oxygen present in the contaminated atmosphere to support life.

#### TERMINOLOGY

Warnings, cautions and notes used in these instructions have the following significance:

#### NOTES

Procedures and techniques that are considered important enough to emphasize.

#### CAUTIONS

Procedures and techniques, which if not carefully followed, will result in damage to the equipment.

#### WARNINGS

Procedures and techniques, which if not carefully followed, will expose the user to the risk of serious injury, illness or death.

#### WARNINGS

Improper Use of Your Respirator Can Be Harmful or Deadly! For Your Safety, Read and Follow These Directives. If You Do Not Understand Them—Ask Your Supervisor!

1. This instruction sheet is for your respirator in its original condition ONLY! These instructions DO NOT APPLY if your facepiece has been converted to a powered air-purifying or supplied-air respirator. If converted, see instructions for Compact Air PAPR (P/N CA102) or Airline Accessory (P/N CF2007).
2. You MUST select a respirator approved for all the contaminants and concentrations in your work area. See the NIOSH Approval Label before use. Ask your supervisor to be sure you have the correct respirator.

#### WARNINGS

3. NEVER use your respirator:
  - To perform or observe sand-blasting/abrasive-blasting;
  - To enter a sand-blasting/abrasive-blasting area unless air quality has been checked for contaminants;
  - To fight fires;
  - In any atmosphere with less than 19.5% oxygen at sea level;
  - In atmospheres where contaminants and/or concentrations are unknown or pose immediate danger from toxics, corrosives or asphyxiates;
  - When contaminant concentrations exceed 10 times the permissible exposure limit (PEL) set by OSHA or other government regulations;
  - To protect against particulates containing oil unless a NIOSH "R" or "P" filter is used;
  - To protect against gases or vapors without using air-purifying cartridges that have End-of-Service-Life-